



ROYAL WESTERN
YACHT CLUB OF ENGLAND

2

Allspars
Final Fling
Dinghy Regatta

Sailing Instructions

Saturday 11th and Sunday 12th October 2025

Organising Authority: Royal Western Yacht Club of England Ltd
Plymouth UK

Sailing Instructions

1. RULES

- 1.1 Racing will be governed by the 'Rules' as defined in the Racing Rules of Sailing. In the event of a conflict between the Notice of Race and these SI's, the SI's shall prevail. This changes RRS 63.7.
- 1.2 Where boats are racing within the boundaries of the Port of Plymouth they are referred to the Dockyard Port of Plymouth Order 2020, a copy of which is displayed on the website <https://www.legislation.gov.uk/uksi/2020/1261/made> and Local Notices to Mariners. When the Race Committee believes that such regulations have been broken so as to bring the sport into disrepute it will act under RRS 60.2(c) requesting the Protest Committee to act under RRS 69.1(a), Allegation of Misconduct. Failure to comply with instruction from the Race Committee may result in a boat being scored DSQ
- 1.3 The Exoneration Penalty and RYA Arbitration of the RYA Rules Disputes Procedures will be available. This procedure can be seen on the RYA website (<https://www.rya.org.uk/racing/rules/rules-disputes>) and will be posted on the Notice Board. The Exoneration Penalty will be a 30 % placing penalty with a minimum of three places but not greater than DNF and will be scored DPI. The Arbitration Penalty will be the same as the Exoneration Penalty, scored DPI. Scores of other boats will not be adjusted. This changes rules 63.1 and A5."
- 1.4 Rule 40.1 will be applicable at all times whilst afloat.
- 1.5 Results will be calculated using Average Lap Times.

2. NOTICES TO COMPETITORS

- 2.1 Notices to Competitors will be displayed on the Official Regatta Notice Board in the Royal Western Yacht Club. Notices may also be posted on the event WhatsApp Group which will form an unofficial notice board. Failure to post notices to the WhatsApp group will not be grounds for redress.

3. CHANGES TO SAILING INSTRUCTIONS

- 3.1 Any change to the sailing instructions will be posted 2 hours before the first warning signal on Saturday 11th October and before 0800 on Sunday 12th October, except that any change to the schedule of races will be posted by 2000 on the day before it will take effect.


4. SIGNALS MADE ASHORE

- 4.1 Signals made ashore will be displayed at the RWYC Flagstaff.
- 4.2 When flag AP is displayed ashore, '1 minute' is replaced with 'not less than 30 minutes' in the race signal AP. This changes the meaning of Flag AP in RRS.

5. SCHEDULE

5.1

DATE	TIME	ACTIVITY
Saturday 11 th October	0900 – 11.00	Registration
	1100	Briefing
	12.55	First warning signal first race of the day. Two average lap races followed by one long distance race scheduled.
	1800	Prize giving and happy hour
Sunday 12 th October	10.25	First warning signal first race of the day. Two average lap races followed by one long distance race scheduled.
	After 1600	Prize giving at RWYC after completion of final race.



5.2 No launching will be permitted until flag D  is raised with one sound signal.

5.3 For both classes 3 races are scheduled each day.

5.4 On Saturday 11th October, no warning signal will be made after 1700 and on Sunday 12th October, no warning signal will be made after 1500.

6. CLASSES

6.1 The fleet will be split into Fast and Slow Handicap classes based on Portsmouth Yardstick Handicaps. The split will be posted on the Official Regatta Notice Board also given on the Final Fling WhatsApp Group (unofficial notice board).

6.2 Class Flags will be G  for Fast Handicap and K  for Slow Handicap. Class starts may be combined.

6.3 The split between the two classes, in addition to be given as per SI 6.1, will be announced at the briefing on Saturday morning at 1100.

6.4 Each class will start in accordance with RRS 26.

6.5 There will be at least 1 minute between each class sequence.

7. RACING AREA

7.1 Racing will take place in Plymouth Sound and approaches.

7.2 The Committee boat will be Fulmar, a white motor launch.

8. COURSES and MARKS

8.1 No later than the warning signal for the respective class, the race committee will designate the course for that class by displaying it on the side of the committee boat.

8.2 All courses will use harbour or/ and laid inflatable marks.

8.3 The first two races of each day will be a mix of Windward/ Leeward, Triangle or Triangle/ Sausage using inflatable marks. Course type and numbers of laps will be displayed on the committee vessel side as shown in **Appendix B**. Competitors shall pass through the Start/Finish line at the start of each lap.

8.3.1 The Fast Handicap Fleet will always go to mark 1A rather than 1 (See Appendix B). Mark 1A will be a red pyramid buoy. All other inflatable marks forming part of the course will be yellow cylinders.

8.4 The finish for the two average lap races is shown in **Appendix B**

8.5 The 3rd Race of each day will be a long-distance race.

8.5.1 Where the course is Round the Cans (RTC), the marks to be used will be those within **Appendix A**. The marks to be used will be indicated by lettered boards displayed on the committee boat rail. The lettered boards refer to various buoys as listed in Appendix A. The letters will be white on a **RED** or **GREEN** background, indicating **PORT** or **STARBOARD** hand respectively. The boards are to be read from left to right.

8.5.2 Where the course will be around Plymouth Breakwater, this will be designated using orange* digital letters on a black board spelling out "Br" and will be followed with a **RED** or **GREEN** board representing **PORT** or **STARBOARD** hand respectively. Where an inflatable mark is to be laid as part of the course, this will be displayed on the same board with the letter "A" followed with a **RED** or **GREEN** board representing **PORT** or **STARBOARD** hand respectively. The boards are to be read from left to right. The inflatable mark will be a yellow Cylindrical Buoy.

8.6 The finish for the long-distance races will be on the club line as described in SI 10.2.2

9. THE START

9.1 The start line will be between the mast displaying an orange flag on the Committee vessel and the outer distance mark on the port side, an orange pillar buoy.

9.2 To alert boats that a race or sequence of races will begin soon, an orange flag will be displayed on the committee boat mast with one sound signal at least 5 minutes before a warning signal is made.

9.3 Boats whose warning signal has not been made shall avoid the starting area during the starting sequence for the other class.

9.4 The first start will be Fast Handicap (Flag G) and the second start will be Slow Handicap (Flag K).

9.5 The first warning signal is scheduled to be given at 12.55 Saturday and 10.25 Sunday. Following races will start as soon as practically possible after the completion of the preceding race.

9.6 The class subject to general recall will be started after any class yet to start. This changes Race Signals and RRS 29.2.

9.7 Any boat that has not started within 4 minutes of her starting signal, shall be scored DNS.

10. THE FINISH

10.1 SATURDAY/ SUNDAY SHORT RACES

10.1.1 The finish line will be between a staff displaying a blue flag and the outer distance mark on the port side, an orange pillar buoy.

10.1.2 A boat will finish after they have sailed the course and crossed the finish line following the course being shortened for their fleet or having completed the numbers of laps defined in **Appendix B**.

10.1.3 After crossing the finish line all boats must sail off the racing area and not return until the last boat has finished the race.

10.1.4 Individual classes may be shortened by displaying the class flag displayed above the "S" flag.

10.2 SATURDAY/ SUNDAY LONG DISTANCE RACES

10.2.1 Each boat will sail the course and finish on the club line.

10.2.2 A boat shall finish on the RWYC line by sailing across an extension of a transit from the RWYC flag mast and a yellow and black striped transit staff on the shore below it in the direction from the last mark. The outer distance limit of the line will be the yacht mooring buoys on the south side of the main Cattewater channel. **See Appendix C**

11. PROHIBITED RACING AREA.

11.1 Whilst racing, boats are prohibited from entering the Controlled Mooring Area located north of Mountbatten peninsula and south of the Plym navigation channel. Boats must remain north of a line extending from the westerly mooring buoy positioned on the south side of the Plym navigation channel, east through each mooring buoy on the northern boundary of the Controlled Mooring Area and west of a line extending from the most westerly mooring buoy on the south side of the Plym navigation channel due south to the Mountbatten peninsula. The prohibited area defined above ranks as an obstruction to sea room under RRS. **See Appendix C**

12. PENALTY SYSTEM

12.1 Rule 44.1 is changed so that the Two-Turns Penalty is replaced by the One-Turn Penalty.

13. PROTESTS AND REQUESTS FOR REDRESS

13.1 Protest forms are available from the Regatta Office in the Royal Western Yacht Club. Protests and requests for redress or reopening shall be delivered to the regatta office within the appropriate protest time limit.

13.2 The protest time limit is 60 minutes after the last boat has finished the last race of that day or 60 minutes after the time that the race committee signals no more racing today.

13.3 Notices will be posted on the official Regatta notice board no later than 30 minutes after the protest time limit ends to inform competitors of hearings in which they are parties or named as witnesses. All parties to a hearing must assemble at the appointed time.

13.4 Notice of a hearing posted on the Regatta noticeboard will be adequate notice to competitors. The notice of a hearing may also be repeated on the WhatsApp Group (unofficial notice board). This changes RRS 63.2

13.5 Notices of protests by the race committee or protest committee will be posted to inform boats under RRS 61.1(b)

14. SCORING

14.1 Two races are required to be completed to constitute a series.

15. DISCARDS

15.1 (a)When fewer than 5 races have been completed, a boat's series score will be the total of her race scores.

15.2 (b)When 5 or more races have been completed, a boat's series score will be the total of her race scores, excluding her worst score.

16. RETIREMENTS

16.1 Boats retiring from a race shall inform a race committee boat at the earliest opportunity.

17. PRIZES

17.1 Daily prizes and overall prizes will be awarded.

18. RISK STATEMENT

18.1 Rule 3 of the Racing Rules of Sailing states: “The responsibility for a boat’s decision to participate in a race or to continue racing is hers alone.” Sailing is by its nature an unpredictable sport and therefore inherently involves an element of risk. By taking part in the event, each competitor agrees and acknowledges that:

- (a) They are aware of the inherent element of risk involved in the sport and accept responsibility for the exposure of themselves, their crew and their boat to such inherent risk whilst taking part in the event;
- (b) They are responsible for the safety of themselves, their crew, their boat and their other property whether afloat or ashore;
- (c) They accept responsibility for any injury, damage or loss to the extent caused by their own actions or omissions;
- (d) Their boat is in good order, equipped to sail in the event and they are fit to participate;
- (e) The provision of a race management team, patrol boats and other officials and volunteers by the event organiser does not relieve them of their own responsibilities;
- (f) The provision of patrol boat cover is limited to such assistance, particularly in extreme weather conditions, as can be practically provided in the circumstances.

19. INSURANCE

19.1 Each participating boat is required to hold adequate insurance and in particular to hold insurance against third party claims in the sum of at least £3,000,000.

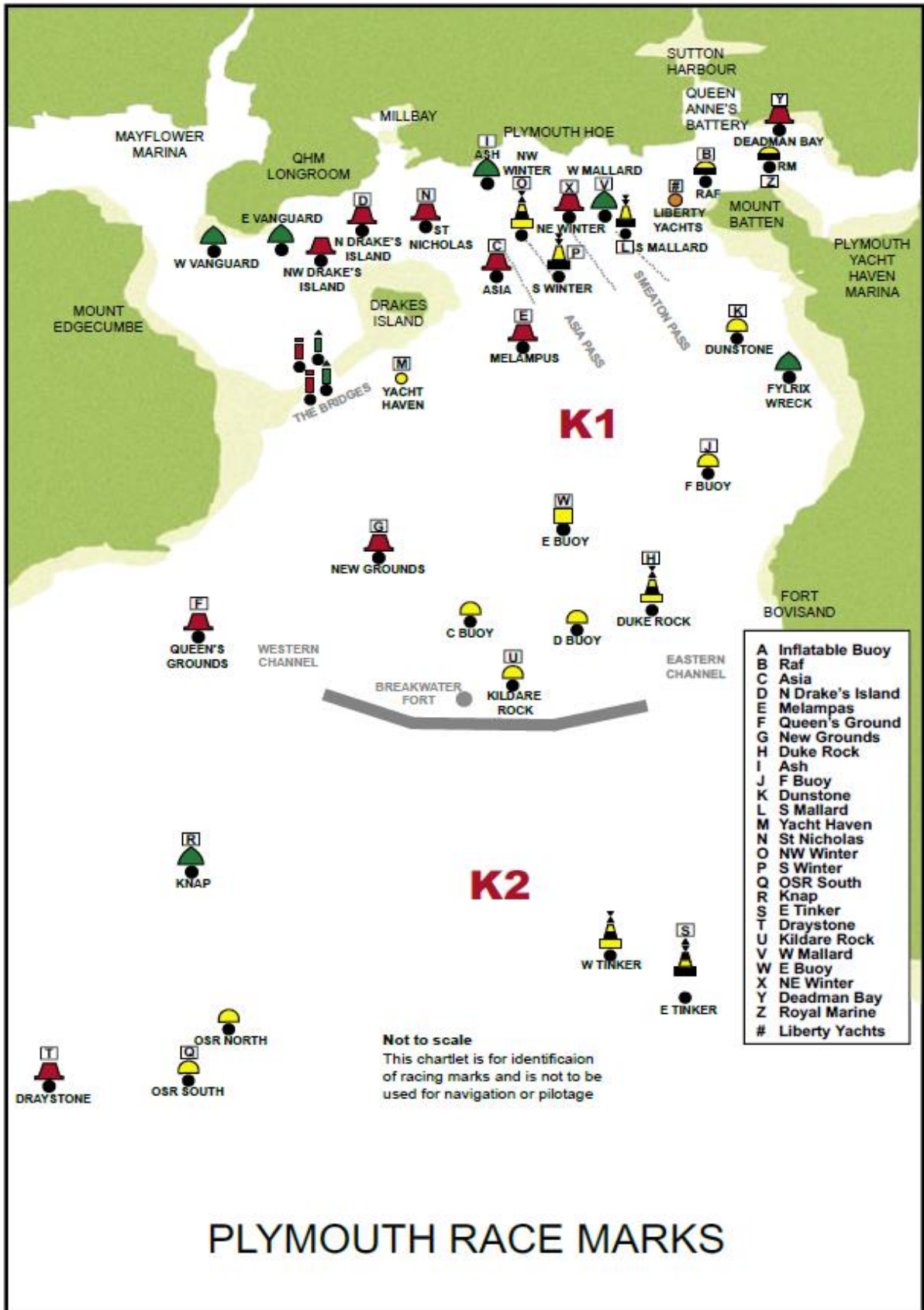
20. MEDIA WAIVER

20.1 Competitors are asked (on the entry form) to give their consent to the sponsors and the Organising Authority, to use their name, comments, photograph and likeness in order to promote the Allspars Final Fling Regatta.

21. FURTHER INFORMATION

21.1 The Regatta Office can be contacted by e-mail as follows:
Email: sam_hannaford@outlook.com

APPENDIX A:

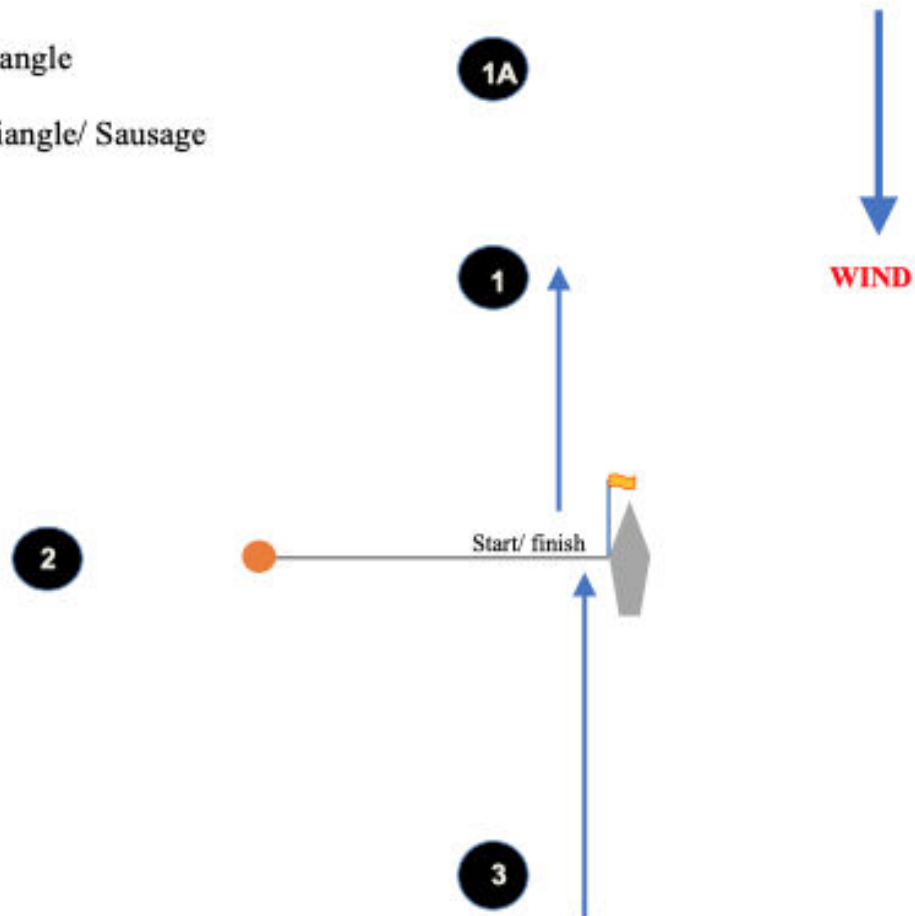


APPENDIX B:

W Windward/ Leeward

T Triangle

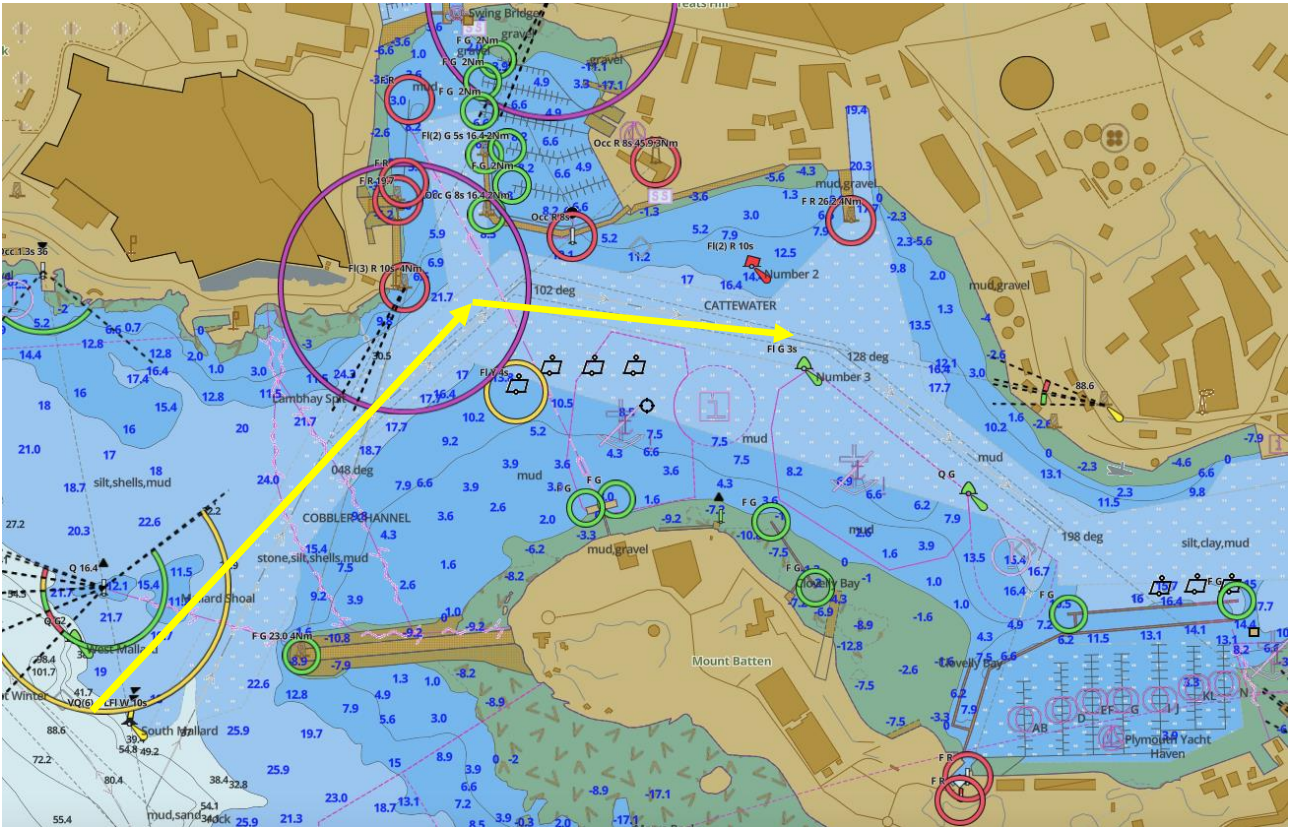
TS Triangle/ Sausage



Signal	Mark Rounding Order
W2	1 - 3 - 1 - 3 - Finish
W3	1 - 3 - 1 - 3 - 1 - 3 - Finish
W4	1 - 3 - 1 - 3 - 1 - 3 - 1 - 3 - Finish
<hr/>	
T2	1 - 2 - 3 - 1 - 2 - 3 - Finish
T3	1 - 2 - 3 - 1 - 2 - 3 - 1 - 2 - 3 - Finish
<hr/>	
TS1	1 - 2 - 3 - 1 - 3 - Finish
TS2	1 - 2 - 3 - 1 - 3 - 1 - 2 - 3 - 1 - 3 - Finish

Note: Fast Handicap uses Windward Mark 1A and Slow Handicap uses Windward Mark 1

APPENDIX C



Club Line Finish: A boat shall finish on the RWYC line by sailing in an easterly direction across an extension of a transit from the RWYC flag mast and a yellow and black striped transit staff on the shore below it in the direction from the last mark. The outer distance limit of the line will be the yacht mooring buoys on the south side of the main Cattewater channel, which form an obstruction under RRS, see SI 10.2.2 and 11.1